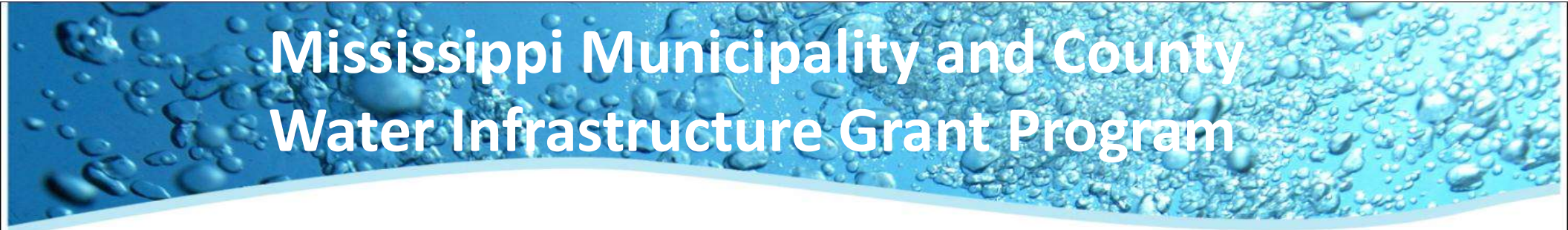


The background of the slide is a close-up photograph of water. It features numerous bubbles of various sizes, some large and some small, scattered across the frame. The water has a deep blue hue, and there are subtle ripples and reflections on its surface, creating a textured and dynamic appearance.

MDEQ Resources for Infrastructure



Mississippi Municipality and County Water Infrastructure Grant Program

- SB2822; SB3056
- Provides 1:1 (or limited 2:1) match of State ARPA funds to Local ARPA funds
- Municipalities, counties or public utilities not regulated by PSC
- Eligible projects: Drinking water, waste water and storm water infrastructure
- Projects must be completed (funds spent) by 12/31/2026



MMCWI Grant Program Cont'd

- Anticipated Timeline:
 - Regulations/ranking system/application form by July 1
 - Outreach and education to stakeholders during the summer
 - Goal to receive first round of applications in Fall
 - At least two rounds of applications



Clean Water Revolving Fund

- Provides low-interest loans to governmental entities for wastewater infrastructure
- Annual capitalization grant funding from EPA matched with state funds (5:1)
- Not supplanted by ARPA grant program
- Supplemental funding through Bipartisan Infrastructure Legislation
- Limited percentage of total fund available for subsidy (i.e. similar to a grant)
- For more information: www.mdeq.ms.gov/about-mdeq/grants-loans-and-trust-funds-available-through-mdeq/water-pollution-control-clean-water-revolving-loan-fund-wpcrlf-program/



DAM SAFETY

MISSISSIPPI DEPARTMENT OF ENVIRONMENTAL
QUALITY



National Dam Safety Concerns

Genesis

Thousands killed in US by dam failures in late 1800s and early to mid 1900s

Federal law in 1972 required USACE to inspect dams

- 70 Mississippi dams inspected from 1977-1980



Johnstown, PA flood from South Fork Dam, 1889



Mississippi Dam Safety Program Beginning in 1978

Mississippi's Dam Safety Program formed in 1978, when Section 51-3-39 required any person or entity to obtain permit to construct, enlarge, repair, or alter a dam.

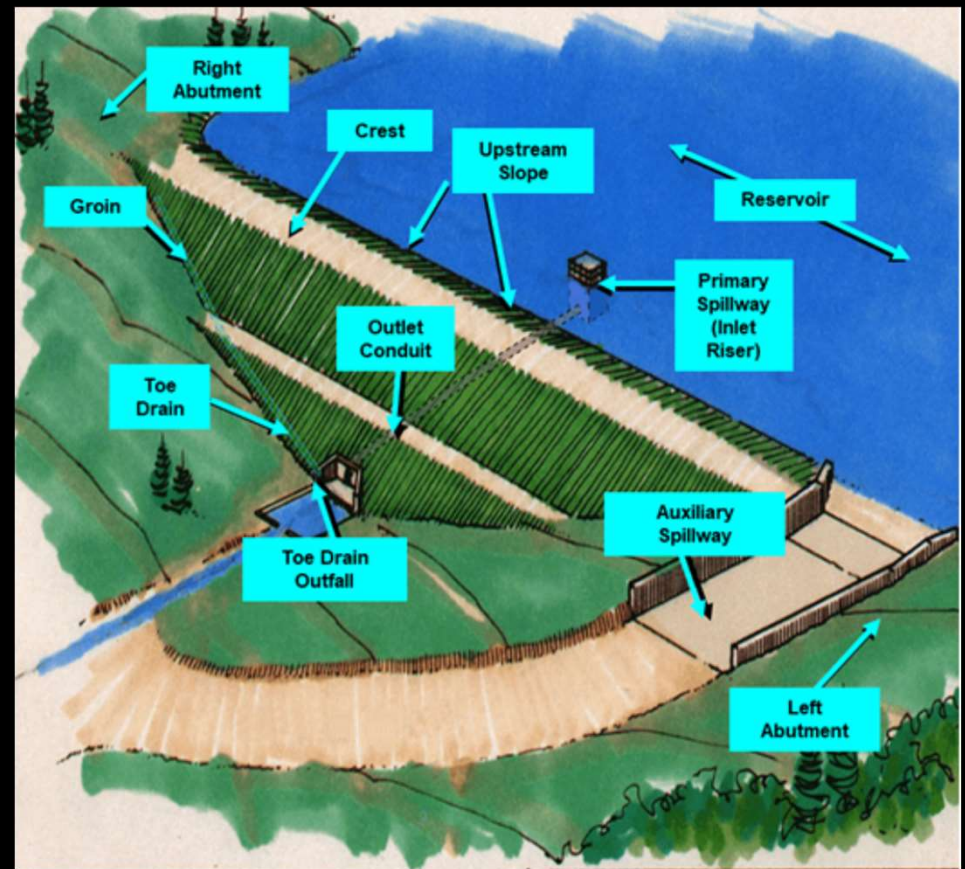
Must obtain permit prior to commencement of any site work related to the project.



Mississippi Dam Safety Regulations

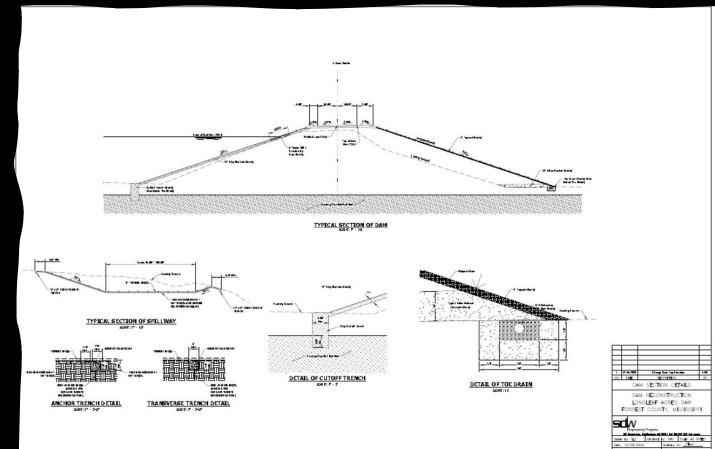
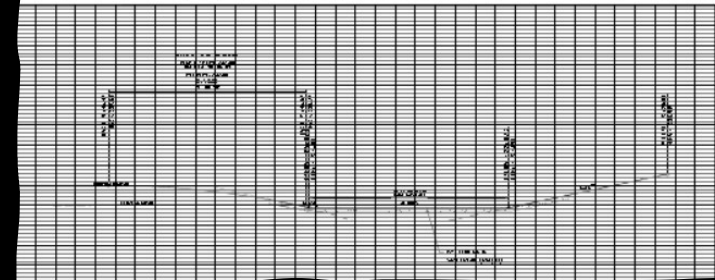
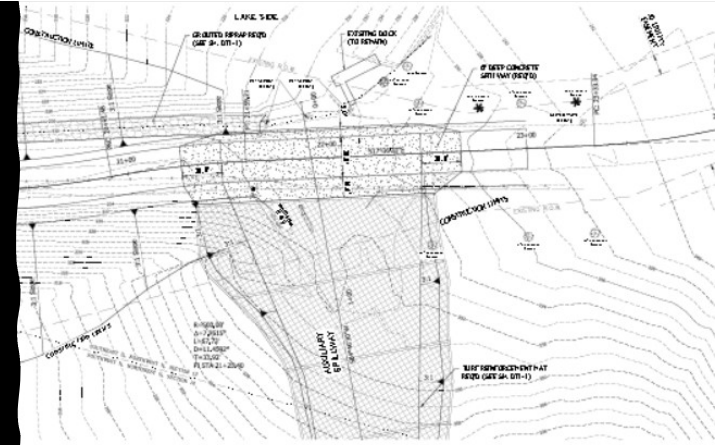
What dams are **“exempt”** from written authorization in Mississippi?

- ❖ **8 feet or less in height** regardless of storage volume
- ❖ a dam that impounds **25 acre-ft or less** at maximum storage
- ❖ A dam that does not impound a watercourse with a continuous flow of water as determined by the Commission.



Mississippi Dam Safety Program Responsibilities

- Determine hazard classifications of dams
 - High
 - Significant
 - Low
- Maintain an inventory of dams in the state
- Review and approve all plans and specifications to construct new dams or modify existing dams



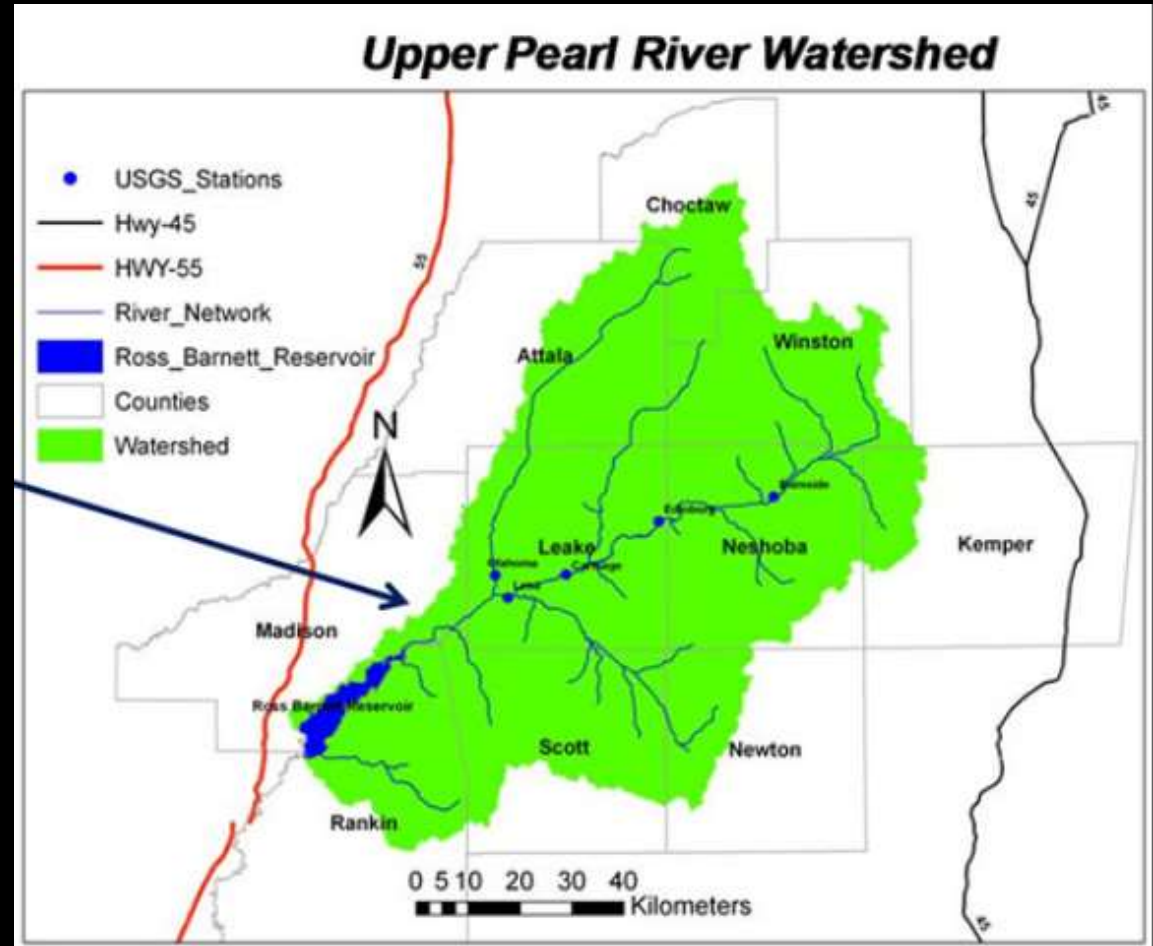
Mississippi Dam Safety

Design Reviews

Where is the water coming from?

Staff utilizes models to simulate Hydraulics & Hydrology (H&H) models to evaluate dam spillway designs to ensure proper flow.

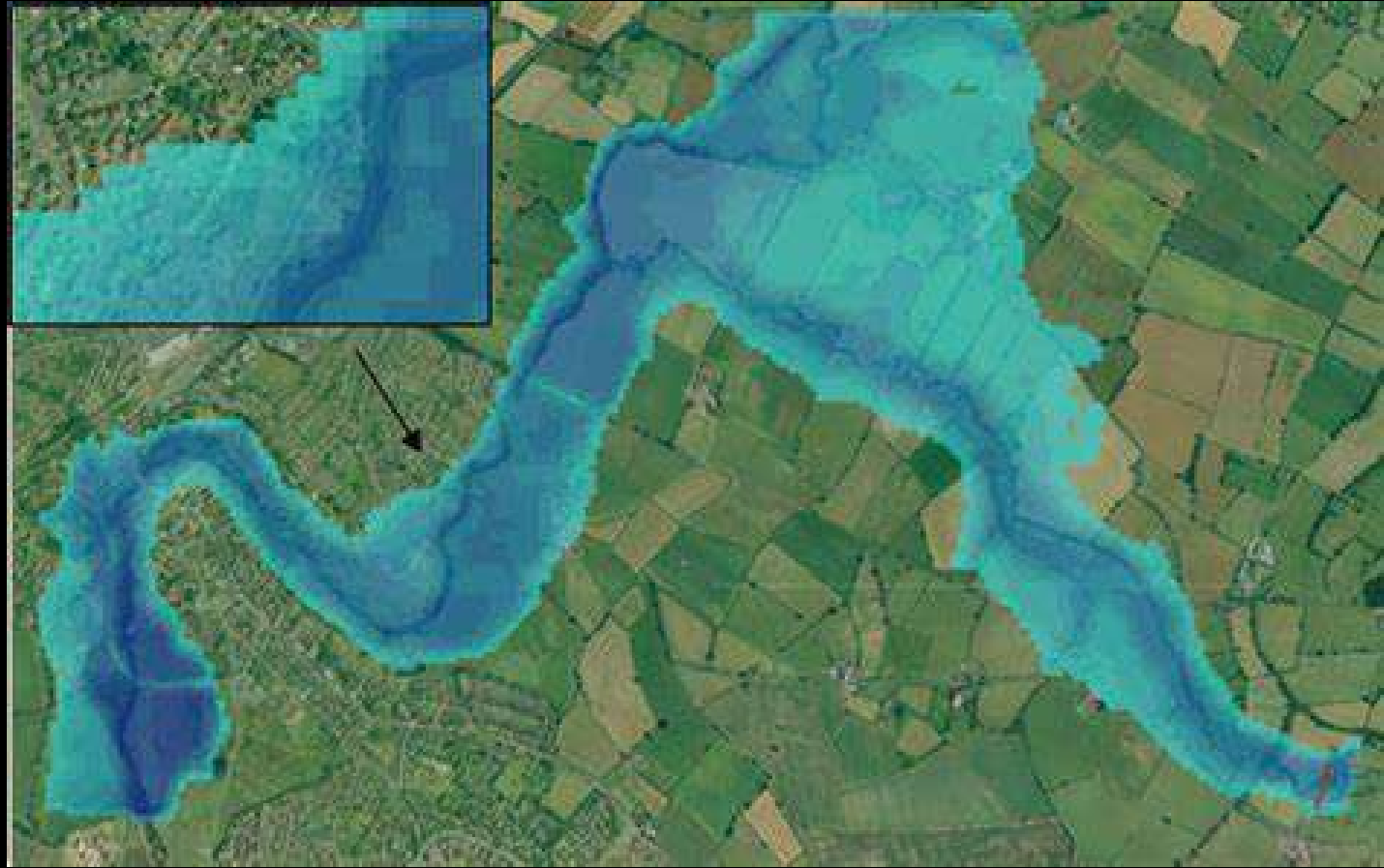
This ensures that the dam will not overtop and fail during major storm events.



Mississippi Dam Safety

Design Reviews – Where is the water going to?

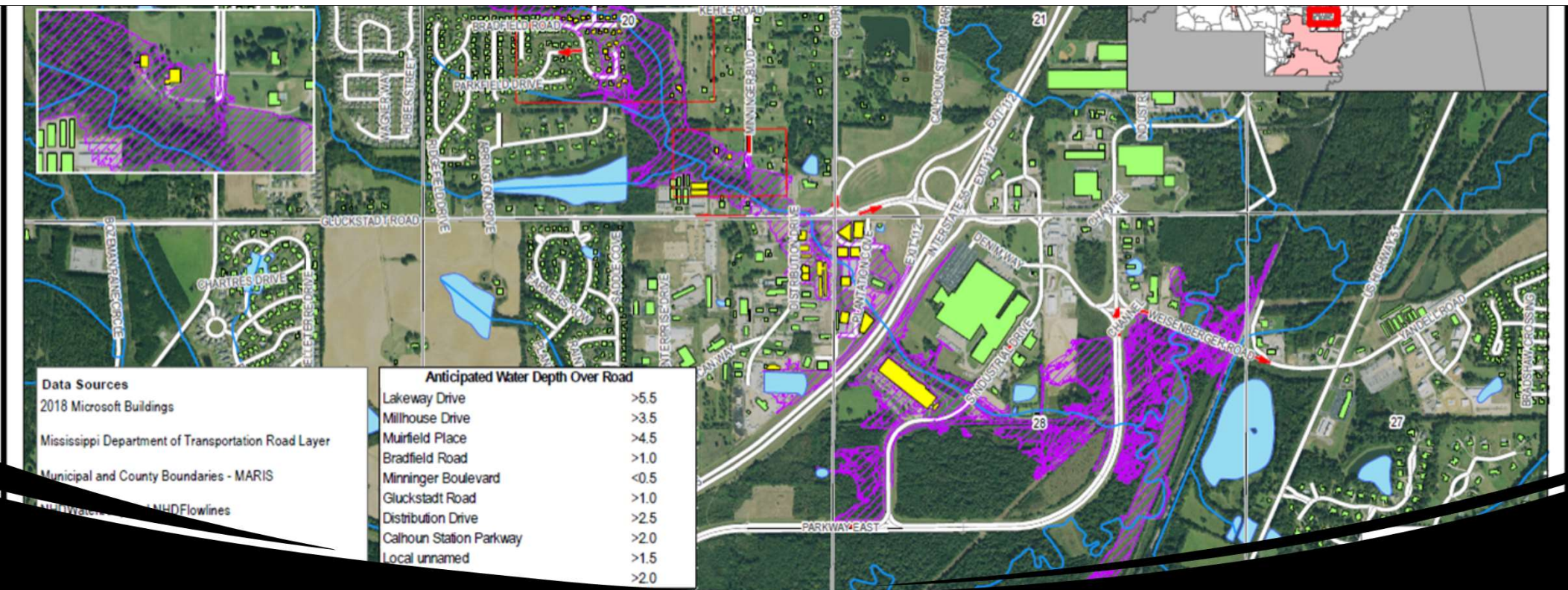
Staff also utilizes models to simulate a breach analysis to determine the flow and timing of floodwaters in the event of a dam failure.



Mississippi Dam Safety Program - Responsibilities

- Inspection of dams under construction
- Inspection of existing dams
- Review inspections of dams and work with dam owners to bring their dams into compliance with the regulations





Mississippi Dam Safety Program

Responsibilities

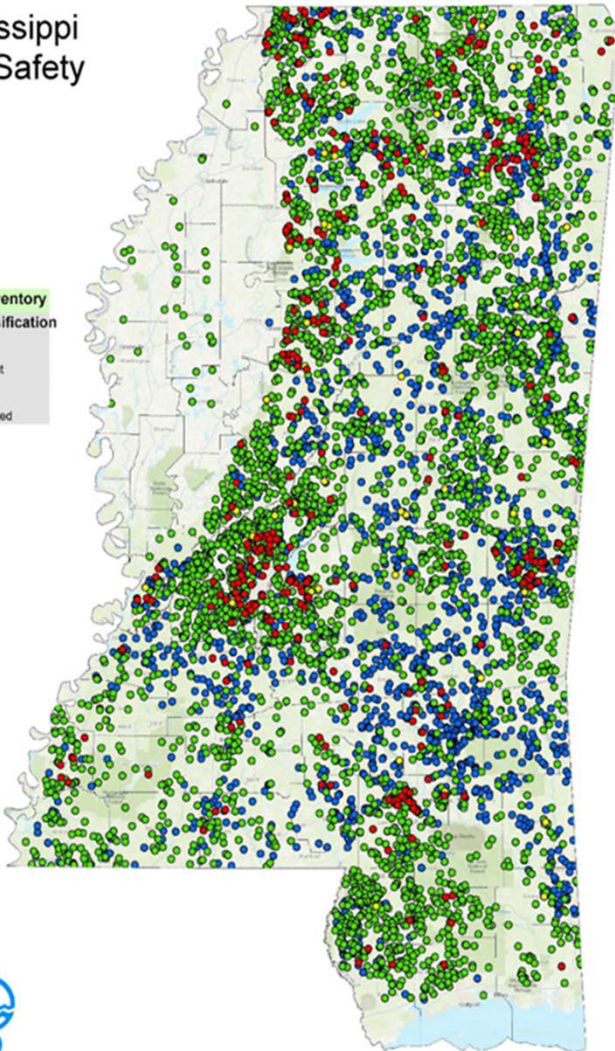
- Review and approve Emergency Action Plans (EAPs)
- Respond to dam failures and incidents



Mississippi Dam Safety

Dams on Inventory
Hazard Classification

- High
- Significant
- Low
- Unclassified



MISSISSIPPI INVENTORY OF DAMS

Dams that are greater than 8 ft
in height and which store more
than 25 acre-ft of water

358	High Hazard Dams
54	Significant Hazard Dams
4931	Low Hazard Dams
1510	<u>Unclassified Dams</u>
6853	TOTAL



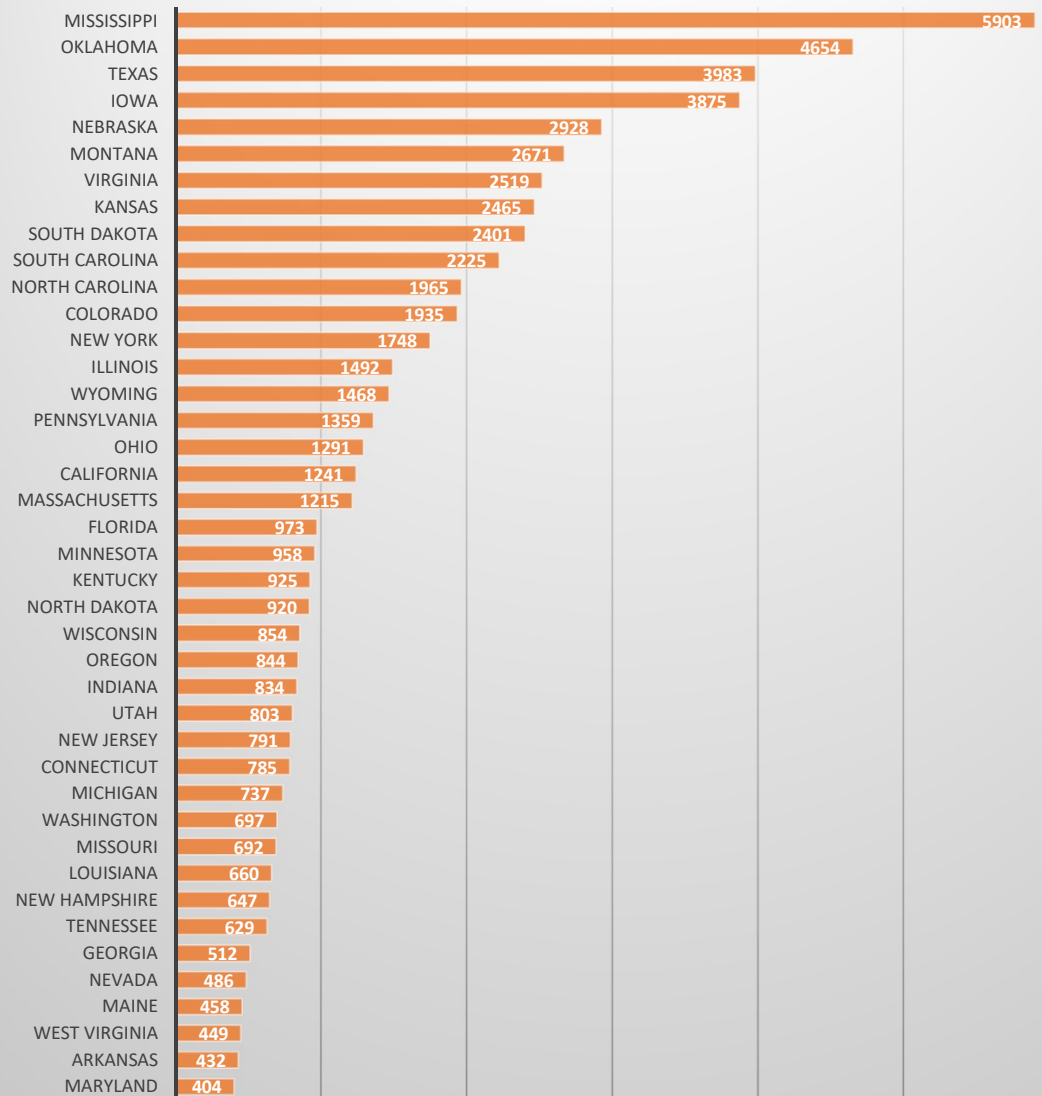
NATIONAL INVENTORY OF DAMS

MAINTAINED BY THE US ARMY CORPS. OF ENGINEERS

Dams that are greater than 20 ft in height and which store more than 40 acre-ft of water



2021 NID - Dams per State





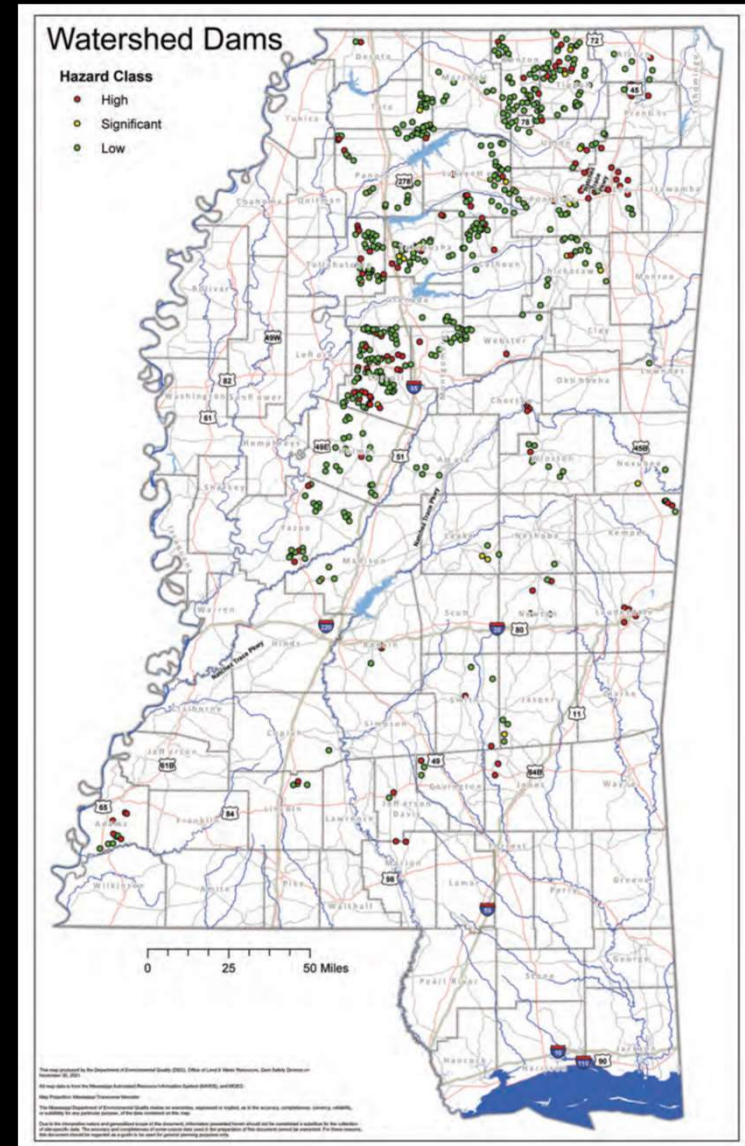
Mississippi Watershed Dams National Background

- In 1944, Congress passed Public Law 76-534 to authorize eleven watershed projects.
- Success led to the Watershed Protection and Flood Prevention Act of 1954. Extended the Soil Conservation Service's authorization to work with local sponsors to implement the watershed program in all states.
- Watershed Protection and Flood Prevention Act of 1954 led to construction of more than 11,800 watershed dams across the country.

Mississippi Watershed Dams

A look at Mississippi

- Watershed Protection and Flood Prevention Act of 1954 led to construction of **604*** watershed dam projects in Mississippi.
 - * **50-year design lifespan**
- Of those, **120** are currently considered **High Hazard** dams.
- Required the formation of local Watershed Districts as sponsors.



Mississippi Watershed Dams

Rehabilitation Efforts

- Federal funding available through USDA, but funding cannot exceed 65% of the total project cost, therefore local match is required.
- Between the local drainage district and the MSWCC much of the match is made up of in-kind services but some local funds are required.
- This resulted in creation of the Watershed Repair and Rehabilitation Program by the Mississippi Legislature in the late 1990's and funded by general obligation bonds in 1999, 2008, and 2014.



Watershed Dams

\$500 M in funding to the Natural Resource Conservation Service (NRCS).

- \$118 million to be made available for Watershed Dam Rehabilitation.
- Local NRCS officials must submit request for funding for consideration.

The logo for the Infrastructure Investment & Jobs Act. It features a stylized white bridge graphic with three piers and a curved top, set against a light blue background. Below the bridge, the text "INFRASTRUCTURE" is written in large, bold, black, sans-serif capital letters. Underneath that, "INVESTMENT & JOBS" is written in smaller, black, sans-serif capital letters, and "ACT" is written in the smallest, black, sans-serif capital letters at the bottom.

INFRASTRUCTURE
INVESTMENT & JOBS
ACT

FEMA – HHPD

\$500 M in additional funding to FEMA for the High Hazard Potential Dam (HHPD) fund over five year period.

- MDEQ receives funding and grants funds to local projects
- Funding available to public entities and private dam owners with a public sponsor
- 65/35 cost match

* Dams built with federal funds are not eligible

The logo for the Infrastructure Investment & Jobs Act. It features a stylized white bridge graphic above the text "INFRASTRUCTURE" in large, bold, black, sans-serif capital letters. Below "INFRASTRUCTURE" is the text "INVESTMENT & JOBS" in a smaller, black, sans-serif font, and "ACT" in an even smaller, black, sans-serif font below that. The entire logo is centered on a light blue rectangular background.

INFRASTRUCTURE
INVESTMENT & JOBS
ACT

Mississippi Dam Safety Fund

Applications Due by July 15

Proposed Regulations establish the Dam Safety Grant Program

- Dam owners can apply to repair, replace, or remove eligible high hazard dams
- Priority ranking system used to determine which proposed projects will reduce the most risk to downstream lives and property
- Assistance provided subject to a 35% cost match
- Award amounts capped at \$300,000.00
- Proposed activities must address all applicable deficiencies and bring the dam into satisfactory condition



MISSISSIPPI DAM SAFETY FUND Application for Grant Funding

For official use only:	
Application No.	

For Electronic submittal, send applications to:
MSDamSafety@mdeq.ms.gov

Please submit Application To:
MDEQ - OLWR
Attn: Dam Safety
P. O. Box 2309
Jackson, MS 39225

This application is for **High Hazard Dams** located in the state of Mississippi. This application is regulated by Title 11 Part 7 Chapter 4: Mississippi Commission on Environmental Quality Dam Safety Grant Program Regulations.

APPLICATION MUST BE RECEIVED BY MDEQ DAM SAFETY DIVISION FOR REVIEW ON OR BEFORE 5:00 PM ON AUGUST 20, 2021.

Dam Name: _____ State ID: _____
Total Project Cost: _____ Grant Funding Requested (65% maximum): _____
Applicant Cost Share (35% minimum): _____
In-kind contribution (up to 35%): _____ (detail to be provided in the "Opinion of Probable Cost")

SECTION A: APPLICANT INFORMATION

Dam Owner/Land Owner:
Name: _____
Address: _____
City: _____ State: _____ Zip Code: _____
Email: _____ Phone No. _____

Applicant/Contact (if different from land owner):
Name: _____
Address: _____
City: _____ State: _____ Zip Code: _____
Email: _____ Phone No. _____

SECTION B: COMPLIANCE INFORMATION

Does this dam have an Emergency Action Plan? _____ Yes _____ No
Date of EAP: _____
Has the plan been distributed as required and signatures on file with MDEQ? _____ Yes _____ No



MDEQ > Water > Dam Safety



Dam Safety

- [2022 MS Dam Safety Fund Grant Application](#)
- [2022 MS Dam Safety Program Grant guidelines](#)



Dam Safety

- [◀ Back](#)
- [Dam Safety Maps](#)
- [Frequently Asked Questions \(FAQs\)](#)

MDEQ ON TWITTER

Tweets by @MDEQ

MDEQ
@MDEQ
Forecast for Mississippi Gulf Coast: Jun 11 Good (Green), Jun 12 Moderate (Yellow)

8h

MS Dept. of Environmental Quality - Dam Safety

Find address or place

The map displays a geographic area in Mississippi, showing numerous dam locations marked with colored diamonds (green, purple, and red). Key features include:

- Creeks:** Burnt Cook Creek, Balfour Creek, Persimmon Creek, Limekiln Creek, Brashear Creek, Panther Creek, Bear Creek, Little Bear Creek, Walnut Creek, and Tilda Bogue.
- Reservoirs:** Lake Caroline Golf Club, Ross R. Barnett Reservoir, and the Madison Rankin Reservoir.
- Locations:** Flora, Madison, Hinds, and Nissan North America Inc-Canton.
- Boundaries:** Dashed lines indicate county boundaries for Madison and Hinds.
- Map Tools:** A search bar at the top, a scale bar (0 to 2 miles) at the bottom left, and a toolbar at the bottom with icons for layers, home, print, and other map functions.



Willie McKercher
Chief, Dam Safety Division
601-961-5207 (office)
769-972-2204 (MDEQ cell – 24/7)
wmckercher@mdeq.ms.gov

