



**SWANA**<sup>®</sup>

SOLID WASTE ASSOCIATION  
of North America

# Industry Safety Update

**SAFETY**



**SWANA**<sup>®</sup>

**MATTERS**



**SWANA**<sup>®</sup>

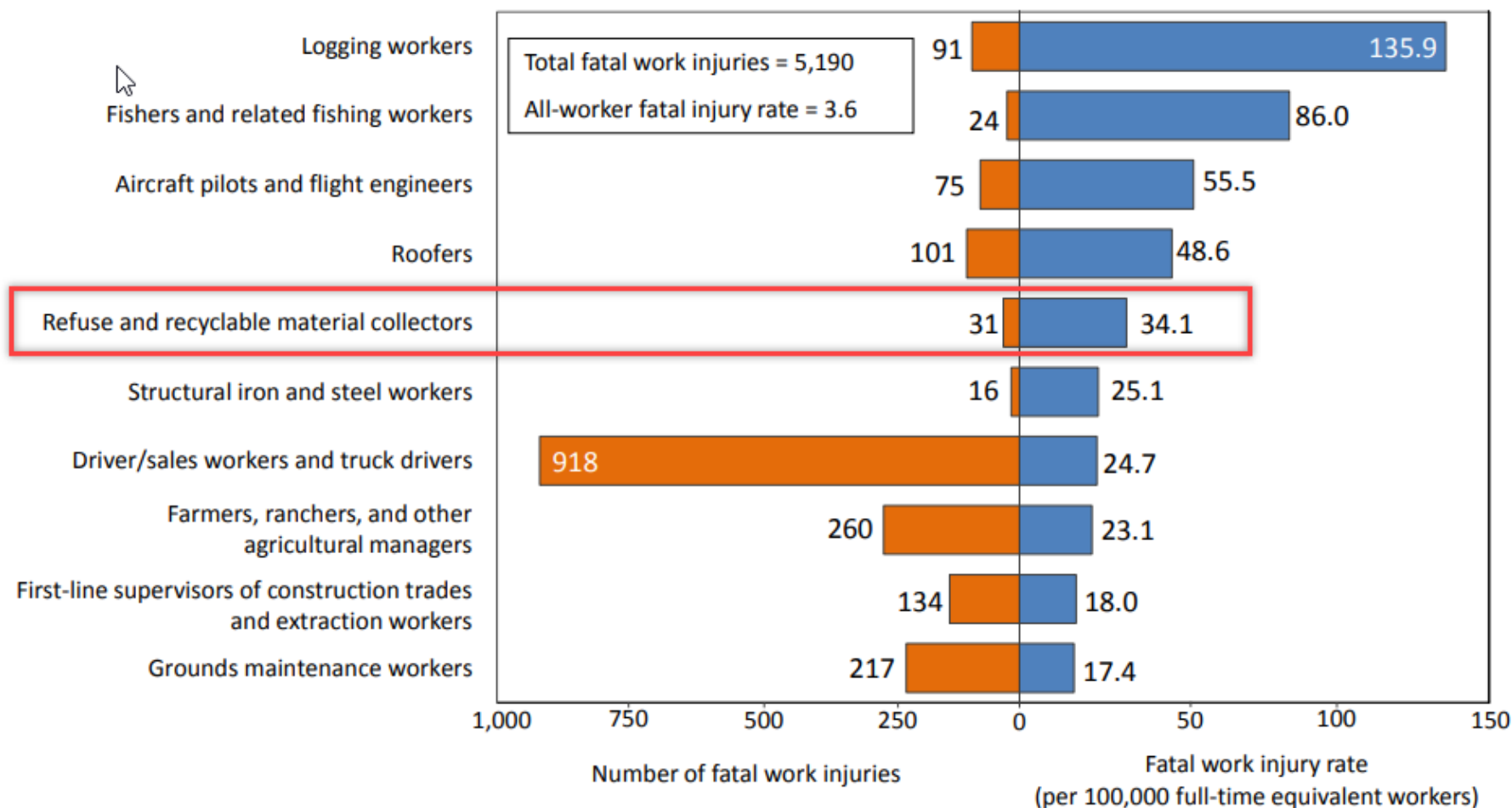
SOLID WASTE ASSOCIATION  
of North America

# Why Safety Matters?

**Waste & recycling  
collection has the  
5<sup>th</sup> highest fatality rate  
of any job in the U.S.**

# 5<sup>TH</sup> DEADLIEST JOB

## Civilian occupations with high fatal work injury rates, 2016





**SWANA**<sup>®</sup>

SOLID WASTE ASSOCIATION  
of North America

# Why Safety Matters?

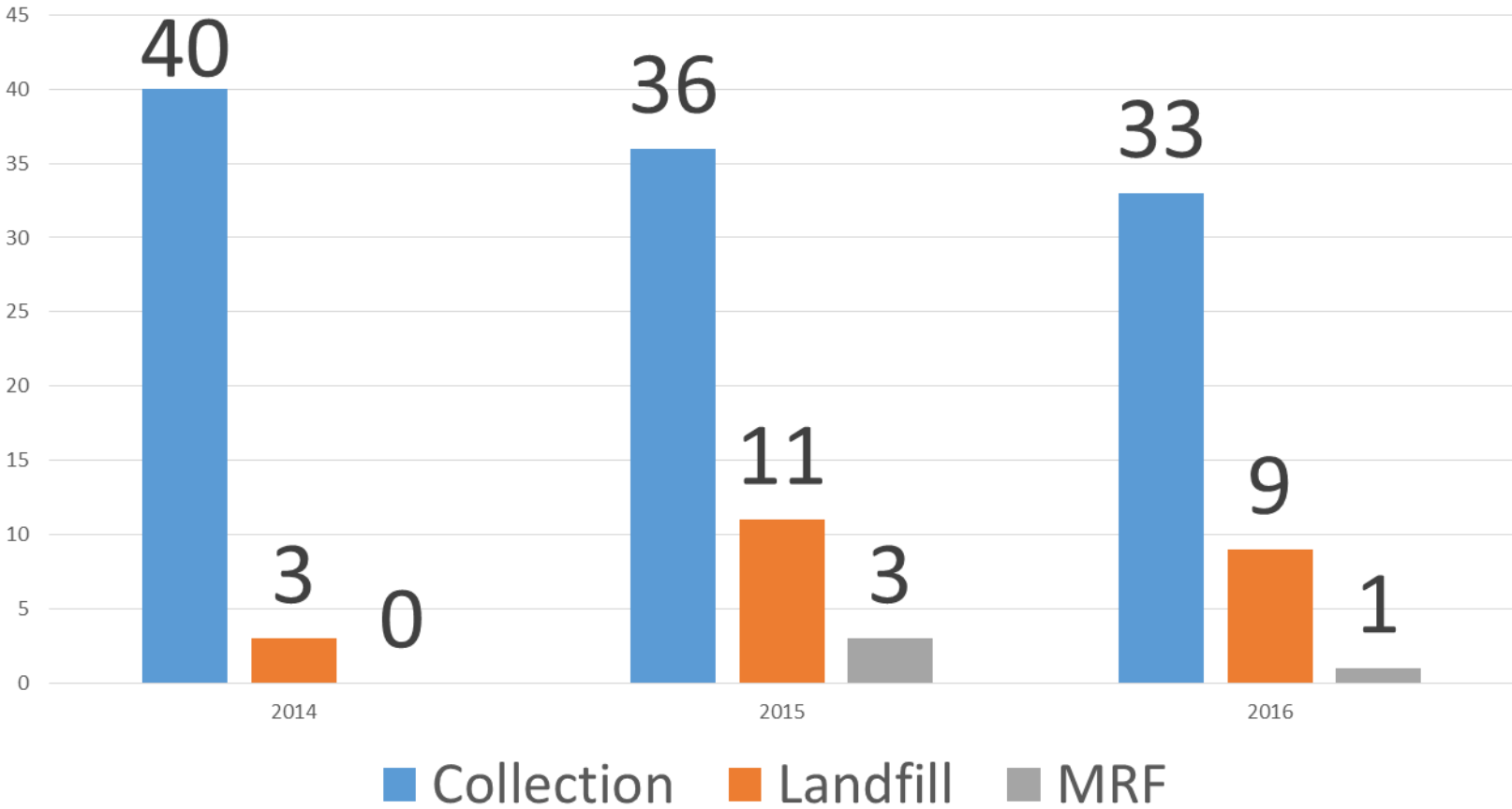
- **1 U.S. waste worker died every 10 days on average in 2017**
- **Higher than police officers or firefighters**
- **Fatality rate and raw numbers have generally increased since 2009**
- **Many worker fatalities occur at small employers in the private sector**
  - Small and medium-sized haulers



**SWANA**<sup>®</sup>

SOLID WASTE ASSOCIATION  
of North America

# 2014 - 2016 National Data



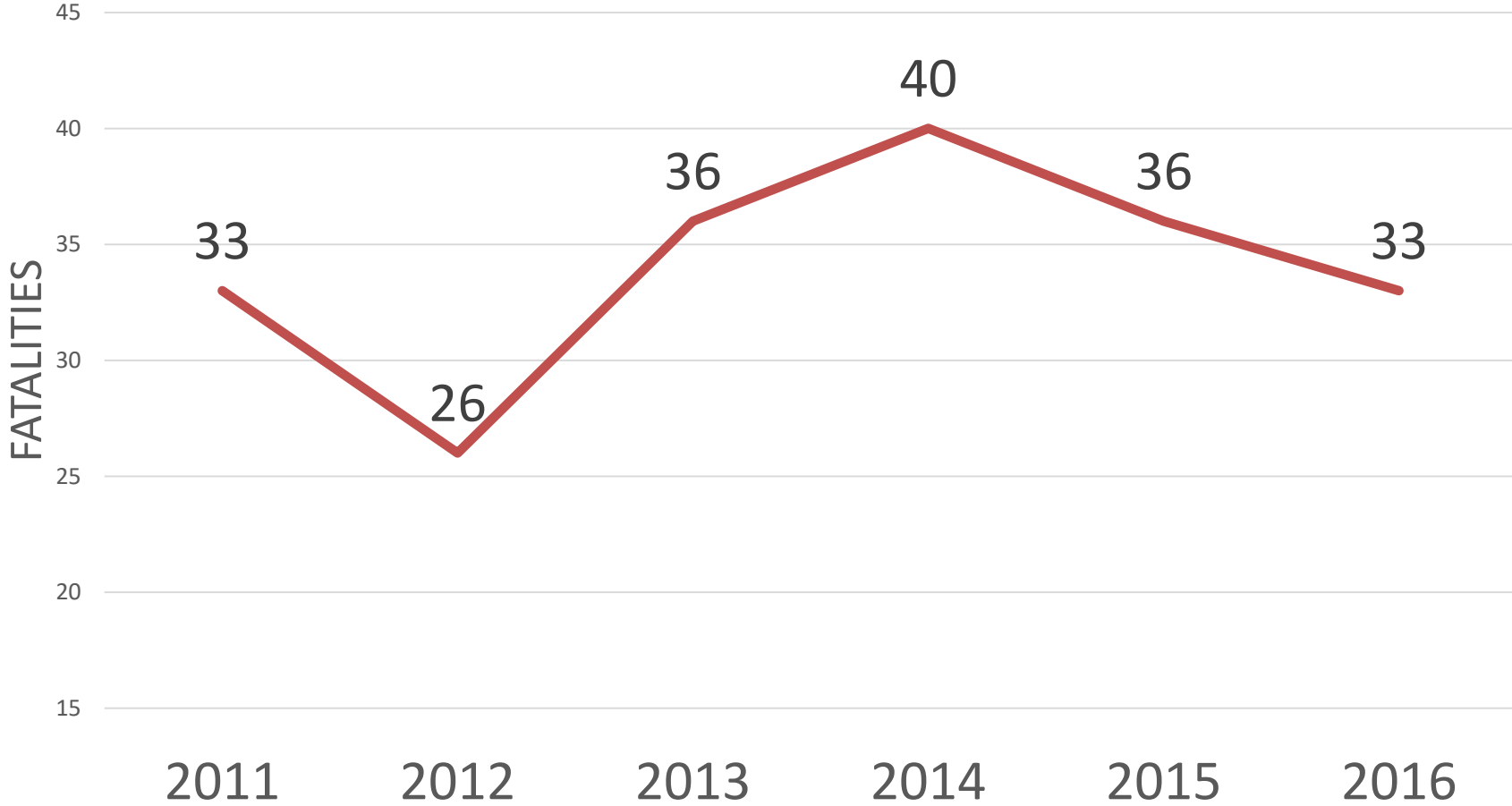


**SWANA**<sup>®</sup>

SOLID WASTE ASSOCIATION  
of North America

# Collection Fatalities

## Solid Waste Collection Fatalities





**SWANA**<sup>®</sup>

SOLID WASTE ASSOCIATION  
of North America

# 2017 SWANA Data

**126 Fatal Incidents**

**132 Fatalities**

- **Both workers & members of the public**
- **Occurred during collection, at MRFs, TS, landfills, etc.**



**SWANA**<sup>®</sup>

SOLID WASTE ASSOCIATION  
of North America

# 2017 SWANA Data

## 38 Solid Waste Workers Died

- **23 drivers and helpers out on collection**
- **8 at landfills**
- **2 at MRFs**
- **2 doing maintenance**
- **2 at Transfer Stations**
- **1 in the yard**





**SWANA**<sup>®</sup>

SOLID WASTE ASSOCIATION  
of North America

# 2017 SWANA Data

## 94 members of the public died

- **Majority were driver or passenger in a vehicle accident**
- **23 pedestrians**
- **8 bicyclists**

## 46 solid waste-related fatalities

[4/26/18]

- **18 solid waste workers**
- **30 members of the public**
- **18 fatalities in January alone**
  - One of the worst months in recent memory



**SWANA**<sup>®</sup>

SOLID WASTE ASSOCIATION  
of North America

# 2018 So Far

- **Solid waste employees**
  - 12 drivers/helpers on collection
  - 4 at landfill
  - 1 at transfer station
  - 1 at yard
- **Members of the public**
  - 26 drivers/passengers in a vehicle
  - 2 bicyclists
  - 2 motorcyclists



**SWANA**<sup>®</sup>

SOLID WASTE ASSOCIATION  
of North America

# Mississippi Fatalities 2017

## Greene County, MS | March 27, 2017

- An inmate worker was killed while working on a garbage truck

## Lucedale, MS | July 6, 2017

- One inmate worker killed and another injured when SUV struck them at back of garbage truck

## Rankin County, MS | July 27, 2017

- Driver of pickup killed after rear-ending garbage truck

## Millard, MS | December 5, 2017

- Person struck while trying to catch roll away vehicle at a landfill

# Fatalities

## Most common collection worker fatalities

- Backing
- Struck by
- Rollover



# Fatalities

## Most common third-party fatalities

- Other driver crosses into path (head on)
- Intersections (pedestrians/other vehicles/bikes)
- Back of the truck/Rear End



# Injuries and Illnesses

- **15,000+ reported injuries or illness/year in U.S.**
  - Collection injury rate is **6.6 (per 100 employees)**
    - Strains/Sprains - Lifting
    - Slips/Trips/Falls
- **2,000+ accidents/year require towed vehicle**



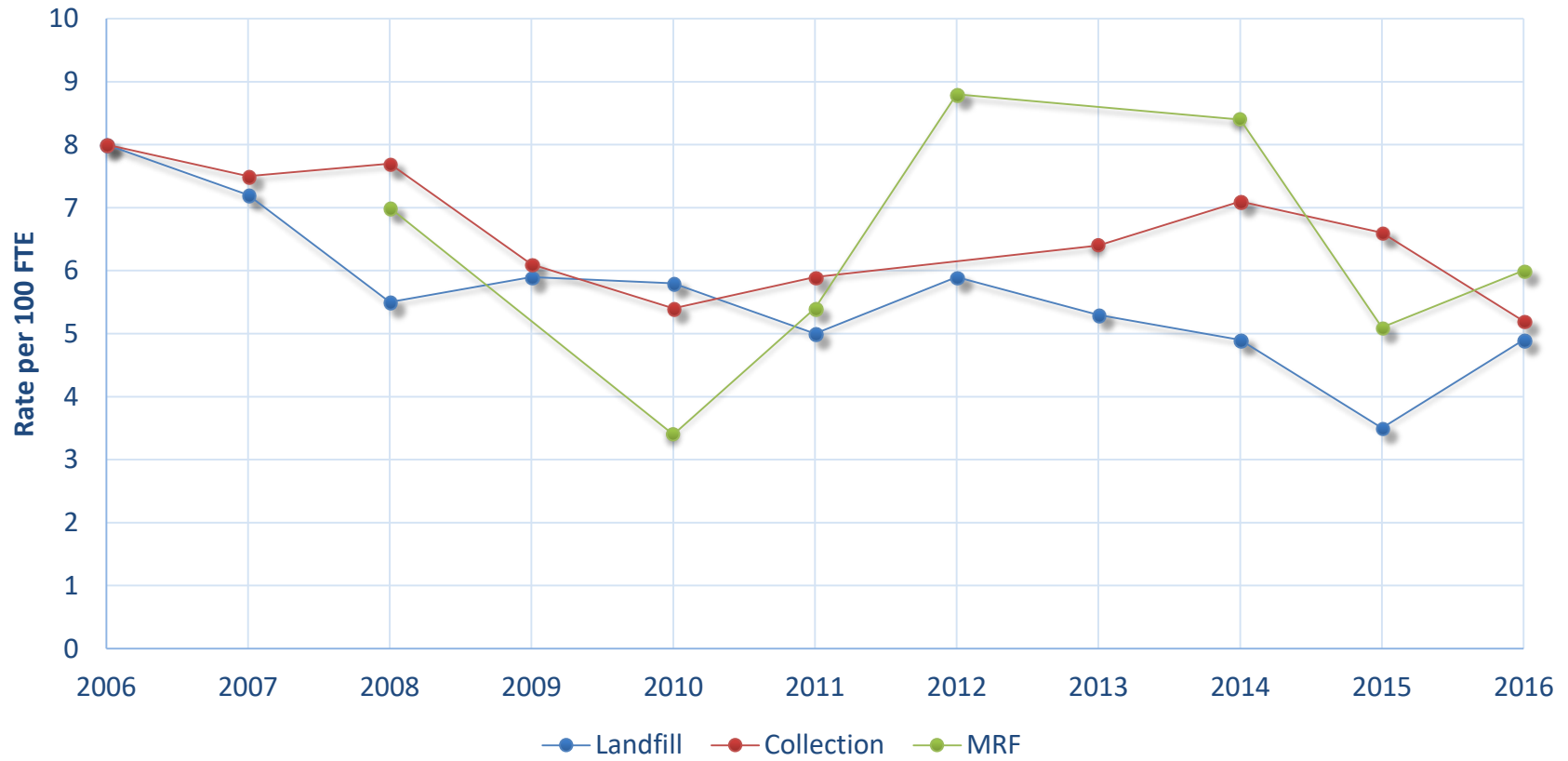


**SWANA**<sup>®</sup>

SOLID WASTE ASSOCIATION  
of North America

# Injuries and Illnesses

## Injuries & Illness 2006 - 2016







**SWANA**<sup>®</sup>

SOLID WASTE ASSOCIATION  
of North America

# Solid Waste Accidents

**Solid waste and recycling vehicles are involved in accidents with EVERYTHING:**



# Fires Continue to be a Problem

**Summer fires hit several recycling facilities**

**Firefighters respond to fire in garbage truck**

**Garbage truck catches fire, damages 4 businesses at Mendham shopping center**

**Plano to dump recyclables in landfill after fire destroys service center**





**SWANA**<sup>®</sup>

SOLID WASTE ASSOCIATION  
of North America

# Natural Gas Truck Fires



The number of fires involving NGV garbage trucks raise public concern

**EDITORIAL : Beware dangers of trucks using natural gas**

NJ Observer-Tribune (Feb. 1, 2017)



**SWANA**<sup>®</sup>

SOLID WASTE ASSOCIATION  
of North America

# Financial Costs

**Major accident costs can easily exceed \$1 million (settlement/jury award; legal fees; insurance increases; management time)**

- Georgia - \$11 million settlement (Nov 2016)
- Oregon - \$14 million jury award (May 2016)
- Michigan - \$14.4 million jury award (March 2015)



I'm afraid you're screwed.



**SWANA**<sup>®</sup>

SOLID WASTE ASSOCIATION  
of North America

# Involve Everybody

## 1. Engage Your Drivers, Operators, and Front Line Workers

- A majority of accidents/injuries are caused by unsafe behavior
- **Make safety personal** for your workers
- How do we motivate workers to change their unsafe behaviors?
- Use photos and video to reach employees
  - Show me; don't tell me
  - Don't make me read it



**SWANA**<sup>®</sup>

SOLID WASTE ASSOCIATION  
of North America

# Know Your Data

## 2. Review Your Safety Data

Safety issues vary:

What are your most common injuries/accidents?

- What are your most costly injuries/accidents?
- Do you have more accidents on certain days/times?
- Figure out common causes—address them
- There is no boilerplate: different fleets, routes, people, leadership, budgets



**SWANA**<sup>®</sup>

SOLID WASTE ASSOCIATION  
of North America

# Real Life Check In

## 3. Route Observation

- Look for compliance with laws & safety processes
- Regular observation by supervisors or cameras
- Leading to substantial reduction in unsafe behaviors and accidents:
  - Proper use of Personal Protective Equipment (PPE)
  - Speed
  - Cellphone/Texting
  - Seat Belts
  - Turn Signals
  - Backing/Riding Step (ANSI guidelines)

***What role can technology play?***

# Communicate Frequently

## 4. Use *Safety Monday* and Other Visual Communication Tools

- Communicate importance of safety frequently and consistently
- Get creative with signs, videos and posters
- Get creative with locations
- Talk about what you hand out or hang up
  - Weekly/monthly safety meetings
  - Conversation when you see somebody doing it right ... or doing it wrong



## 5. Safety Belts

Drivers and helpers should always wear a safety belt in the cab.

It can save a life.



# Distracted Driving

## 6. Distracted Driving is **Dangerous!**

- Cell phone
- Texting
- Food and drinks
- Have a written policy!
- Are you enforcing it?



**The National Safety Council (U.S.) recently reported 27% of all crashes involve cell phone use or texting.**

## 7. Focus on Backing/Rear End Collisions

- These are the two most common accidents for solid waste vehicles.
- Rushing is often a contributing factor - Why are we rushing?
- Is driver using helper/mirror/camera while backing?



# Training to Reduce Injuries

## 8. Focus on **Lifting** and **Slips/Trips/Falls**

- Two most common injuries for solid waste workers.
- Train to lift properly
  - New hires and annual refreshers
  - Aging workforce may be more prone to injury
- Why are your workers falling?
  - Correct footwear
  - Adjusting for bad weather
  - Rushing



Photo Courtesy of: The Atlanta Journal-Constitution

# Post – Collection

## Transfer Stations, Landfills, and MRFs

- Equally challenging work environments
- And heavy equipment
- And customers unfamiliar with the site driving around
- And passengers – small children and pets
- And the allure of other people's garbage – scavenging is not recycling

## 9. Do you?

- Have directional signage and posted speed limits
- Prohibit cell phone use by employees and customers
- Establish truck separation requirements for tipping floor/working face
- Enforce scavenging prohibitions
- Teach about areas under open tailgates and behind swinging doors
- Train employees to avoid slips/trips/falls (on/off equipment)
- Require PPE – high-viz puncture-resistant shoes, gloves, glasses, hearing protection

# Facility Operations

## 9b. And in the facilities, among others:

- Lock-out/Tag-out
- Bale stacking
- Forklifts and skidloaders
- Sorters: hand injuries, repetitive motion, loose clothing
- Slips/trips/falls
- Storing LP cannisters
- Needle sticks



# The Last Line of Defense

## 10. Personal Protective Equipment (PPE)

- Do the PPE analysis for each job
- It's not enough to put people in high visibility clothing
- Identify the risks, select the right protections, write it down
- Make it personal
- Enforce PPE usage
- Set a good example







**SWANA**<sup>®</sup>

SOLID WASTE ASSOCIATION  
of North America

# SWANA's Safety Resources

- [SWANA.org/SAFETY](https://www.swana.org/safety)
- #SWANAsafety
- *Safety Monday*
- Slow Down to Get Around
- Fatality alerts
- Classroom safety & compliance training
- Annual Safety Summit at *WASTECON*
- Partnering with NWRA, EREF, ISWA, NGVA





# Thank You

## Nothing else we do is more important!



**Sharon George**  
**MS Chapter of SWANA Safety Ambassador**  
**TCB Extreme Enterprises, Inc.**  
**346 George Road**  
**Ragland, AL 35131**  
**205-812-5495**  
**29sngeorge@gmail.com**